

## Enclosed filtration system

With stainless steel chassis and stainless steel filter plates and frames (polypropylene). The sheet filter **HERMETIX 600 S** is an enclosed filtration system that caters for the special requirements of the biotechnological and pharmaceutical industry. The design is based on the high hygiene and purity requirements. It can be used for a wide range of applications from fractionation of blood plasma, initial cell harvest to clarification of vaccines, enzymes, antibiotics or in the food industry.



HERMETIX 600 S

**HERMETIX** is a multiple sheet filter (optional with filter cloth or paper) in enclosed design for the filtration with depth filter sheets. The 100% hermetically sealing of the filter package without any leakages is realized by filter sheets inside and a circumferential gasket (O-ring) on each of the filter plates. This eliminates any product contact with the surrounding environment. Unique with the possibility of CIP cleaning and SIP sterilisation.

### Technical data

Operation pressure	max. 6 bar
Temperature	at -10°C – +95°C
CIP cleaning without filter sheet	max. 3 bar at 95°C
SIP sanitisation	max. 2 bar at 131°C

### Materials

Product	Stainless steel AISI 316 L
Roughness	< 0.6 µm, electropolished
Other parts	Stainless steel AISI 304
Gaskets/O-rings	Silicone, EPDM, Viton, FEP-coated (with FDA certification)

### Other materials on request

### Fittings

In- and outlet	TC – DN 50/2"
----------------	---------------

STRASSBURGER  
FILTER 

### Filter plates/frames

Material	Stainless steel AISI 316 L	
Filter plate	Filtration area: 0.60 m <sup>2</sup>	
Filter frame 10 mm	Volume:	3.0 l total/ 2.7 l eff.
Filter frame 20 mm	Volume:	6.0 l total/ 5.4 l eff.
Filter frame 25 mm	Volume:	7.5 l total/ 6.75 l eff.
Filter frame 30 mm	Volume:	9.0 l total/ 8.1 l eff.
Filter frame 40 mm	Volume:	12.0 l total/ 10.8 l eff.

Bulkhead plate to shorten the plate package

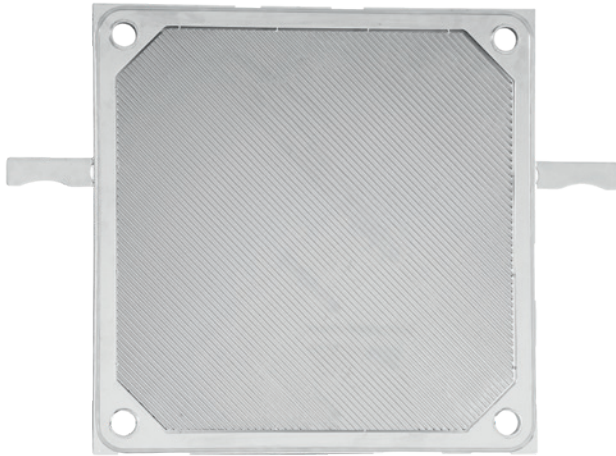
### Hydraulic closing of plate package

Cylinder with mechanical locking  
Pneumatically or electrical operation

### Optional

Signal exchange with PCS  
Design in conformity with ATEX

# PLATE AND FRAME SHEET FILTER HERMETIX 600 S



Filter plate with wave drainage profile and O-ring

### Special features

Hermetically sealed with filter sheets inside and circumferential gasket (O-ring)

CIP- /SIP-compatible

Complete draining and venting due to unique design of the filter plates

Filter frames without any dead spaces

Flexibility by different widths of filter frames

Easy to clean thanks to hygienic GMP design of chassis (angled surfaces)

Highest surface quality and processing

Filter plates with hygienic wave drainage profile

STRASSBURGER FILTER GmbH + Co. KG

Filter – Equipment – Engineering

Osthofener Landstraße 14

67593 Westhofen

Germany

Phone +49 62 44/90 800-0

Fax +49 62 44/90 800-8

info@strassburger-filter.de

www.strassburger-filter.de

## Sheet filter HERMETIX 600 S

Cake frame mm	Filter area m <sup>2</sup>	Volume eff. l	Filter plate / frame Pieces	Filter sheets Pieces	Weight kg	Dimensions mm
Type HERMETIX 600 S/50						2460 x 940 x 1365
10	177	81.0	30/29	60	1790	
20	12.9	110.7	21/20	42	1768	
25	11.1	124.7	19/18	38	1782	
30	9.9	133.6	17/16	34	1783	
40	8.1	145.8	14/13	28	1782	
Type HERMETIX 600 S/100						3650 x 940 x 1365
10	34.5	156.6	58/57	116	2449	
20	25.5	229.5	43/42	86	2467	
25	22.5	252.9	38/37	76	2471	
30	20.1	271.3	34/33	68	2474	
40	16.5	297.0	28/27	56	2476	
Type HERMETIX 600 S/150						4390 x 940 x 1365
10	50.1	226.8	84/83	168	2966	
20	36.3	326.7	61/60	122	2967	
25	32.1	361.0	54/53	108	2976	
30	28.5	384.8	48/47	96	2971	
40	23.7	426.6	40/39	80	2991	
Type HERMETIX 600 S/200						5350 x 940 x 1365
10	60.9	302.4	112/111	224	3568	
20	48.9	440.1	82/81	164	3586	
25	42.9	482.5	72/71	144	3585	
30	38.1	514.4	64/63	128	3579	
40	31.5	567.0	53/52	106	3595	

Here mentioned data and information are indicative and may vary in offer and order case.