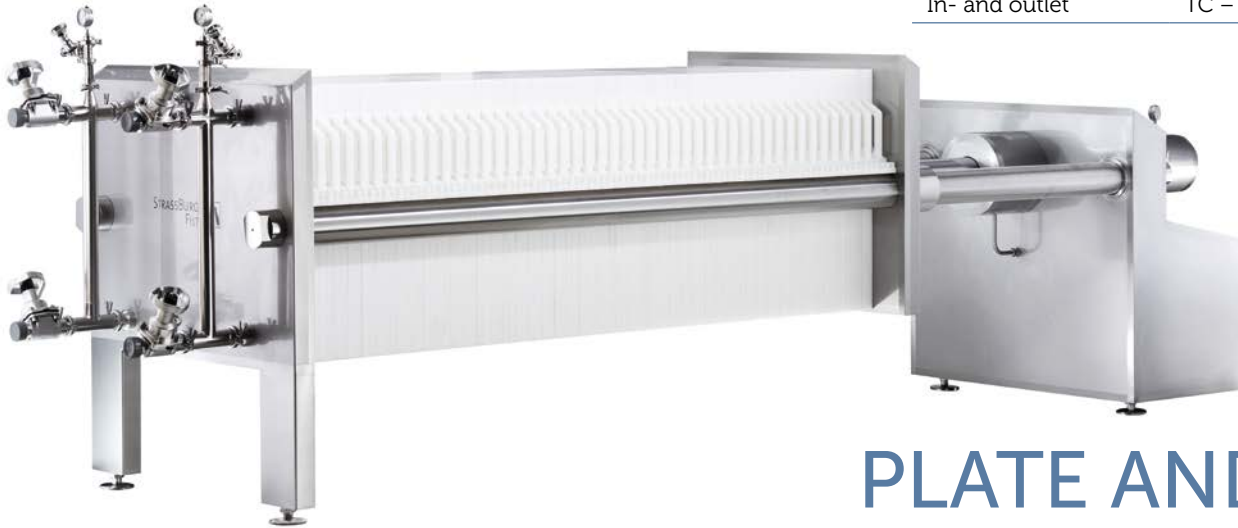


## Enclosed filtration system

With stainless steel chassis and plastic filter plates and frames (polypropylene). The sheet filter **HERMETIX 800 P** is an enclosed filtration system that caters for the special requirements of the biotechnological and pharmaceutical industry. The design is based on the high hygiene and purity requirements. It can be used for a wide range of applications from fractionation of blood plasma, initial cell harvest to clarification of vaccines, enzymes or antibiotics.

**HERMETIX** is a multiple sheet filter in enclosed design for the filtration with depth filter sheets. The 100% hermetically sealing of the filter package without any leakages is realized by filter sheets inside and a circumferential gasket (O-ring) on each of the filter plates. This eliminates any product contact with the surrounding environment. Unique with the possibility of CIP cleaning and SIP sterilisation.



HERMETIX 800 P

### Technical data

Operation pressure	max. 6 bar
Temperature	at -10°C – +65°C
CIP cleaning without filter sheet	max. 1 bar at 65°C
SIP sanitisation	max. 1 bar at 65°C

### Materials

Parts in contact with product	Stainless steel AISI 316 or polypropylene
Roughness	< 0.8 µm
Polypropylene	< 0.8 µm (except for the areas around the eyes)
Other parts	Stainless steel AISI 304
Gaskets/O-rings	Silicone, EPDM, Viton, FEP-coated (with FDA certification)

### Other materials on request

### Fittings

In- and outlet	TC – DN 50 / 2"
----------------	-----------------

STRASSBURGER  
FILTER 

### Filter plates/frames

Material	Polypropylene
Filter plate	Filtration area: 0.84 m <sup>2</sup>
Filter frame 15 mm	Volume: 6.3 l total/ 5.6 l eff.
Filter frame 20 mm	Volume: 8.4 l total/ 7.5 l eff.
Filter frame 25 mm	Volume: 10.5 l total/ 9.4 l eff.
Filter frame 30 mm	Volume: 12.7 l total/ 11.5 l eff.
Filter frame 40 mm	Volume: 16.8 l total/ 15.1 l eff.

Bulkhead plate to shorten the plate package

### Hydraulic closing of plate package

Cylinder with mechanical locking  
Pneumatical or electrical operation

### Options

Drip-proof filter plates without O-ring  
Filtering membrane plate, CIP-compatible  
Signal exchange with PCS  
Design in conformity with ATEX

# PLATE AND FRAME SHEET FILTER HERMETIX 800 P



Membrane plate HERMETIX 800 P

## Sheet filter HERMETIX 800 P

Special features
Hermetically sealed with filter sheets inside
CIP-/SIP-compatible
Complete draining and venting due to CIP-design
Filter frames without any dead spaces
Flexibility by different widths of filter frames
Easy to clean thanks to hygienic GMP design of chassis (angled surfaces)
Highest surface quality and processing

Here mentioned data and information are indicative and may vary in offer and order case.

Strassburger Filter GmbH + Co. KG  
 Filter – Anlagen – Apparatebau  
 Osthofener Landstraße 14  
 67593 Westhofen  
 Germany  
 Phone +49 62 44 / 90 800-0  
 Fax +49 62 44 / 90 800-8  
 info@strassburger-filter.de  
 www.strassburger-filter.de

Cake frame mm	Filter area m <sup>2</sup>	Volume eff. l	Membrane plate/ Filter plate/frame Pieces	Filter sheets Pieces	Weight kg	Dimensions mm
------------------	-------------------------------	------------------	---	-------------------------	--------------	------------------

Type HERMETIX 800 P/50-M						
15	21.0	140	24 / 25	51	4270	4005 x 1225 x 1900
20	19.3	173	22 / 23	47	4262	
25	17.6	197	20 / 21	43	4265	
30	16.0	219	18 / 19	39	4240	

Type HERMETIX 800 P/50						
15	21.0	140	24/25	51	3853	3205 x 1220 x 1610
20	19.3	173	22/23	47	3848	
25	17.6	197	20/21	43	3846	
30	16.0	219	18/19	39	3815	

Type HERMETIX 800 P/100-M						
15	42.0	280	49 / 50	101	5470	6149 x 1225 x 1900
20	37.8	338	44 / 45	91	5459	
25	34.4	385	40 / 41	83	5465	
30	31.1	426	36 / 37	75	5451	

Type HERMETIX 800 P/100						
15	42.0	280	49/50	101	4762	4749 x 1220 x 1610
20	37.8	338	44/45	91	4726	
25	34.4	385	40/41	83	4720	
30	31.1	426	36/37	75	4658	

Cake frame mm	Filter area m <sup>2</sup>	Volume eff. l	Membrane plate/ Filter plate/frame Pieces	Filter sheets Pieces	Weight kg	Dimensions mm
------------------	-------------------------------	------------------	---	-------------------------	--------------	------------------

Type HERMETIX 800 P/150-M						
15	63.0	420	74 / 75	151	6672	8169 x 1225 x 1900
20	57.1	510	67 / 68	137	6654	
25	51.2	573	60 / 61	123	6660	
30	47.0	644	55 / 56	113	6642	

Type HERMETIX 800 P/150						
15	63.0	420	74 / 75	151	5691	6099 x 1220 x 1610
20	57.1	510	67 / 68	137	5650	
25	51.2	573	60 / 61	123	5614	
30	47.0	644	55 / 56	113	5549	

Type HERMETIX 800 P/200						
15	84.0	560	99/100	201	6523	7299 x 1220 x 1610
20	75.6	675	89/90	181	6431	
25	68.9	771	81/82	165	6438	
30	63.0	863	74/75	151	6343	